

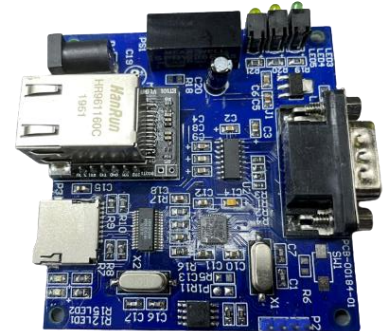
The signal recorder for Transit Car Brake and Auxiliary power



Features

Transit Sequence and Live Monitoring with PoE

- Signal Monitoring of Brake and Auxiliary Power
- Integrated monitoring interfaces
- Real-Time Interpretation and Record Services
- Long Distance Alarm System
- Brake and Auxiliary Power Records Check
- Non-Volatile Recording
- Network interfaces linkable
- Railway Certified
 - Railway Certified EN 50155 (IEC60571) Approved
 - Railway EMC Standard EN 50121-3-2 Approved



Specifications

- Model: RTC-SGA-02
- Dimension: 200L*200W*15HMM
- Voltage: 44~57VDC (PoE Power Supply)(customized to fit your needs)
- Communication Interface: Ethernet, RS-232

